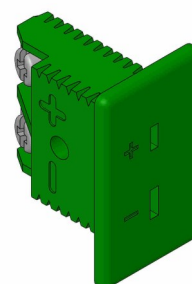


Thermocouple panel jack

Model miniature thermoplastic



Design

Connector with housing of thermoplast and signal connections (sockets) in thermocouple compatible material.

Example of use

Equipping panels for multiple measuring circuits.

Maximum temperature

200 °C

Signal connection

Screw terminals.

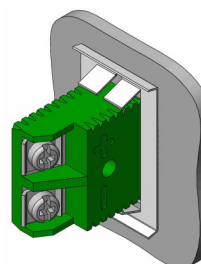
Colour code

According to IEC 60584-3:



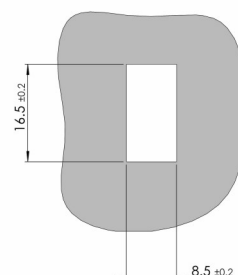
Mounting

With supplied mounting kit.



Hole conditions

Plate thickness 1 to 4 mm.



Part number	Type
03-16020	J
03-26020	K
03-36020	T
03-46020	S och R
03-56020	N
03-66020	B