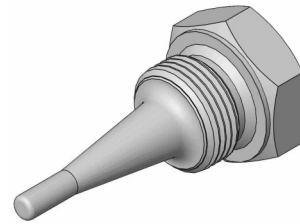


Accessories

Thermowell G1/2"

Modell 9062010, in stock



Design

Machined thermowell.

Example of use

Installation of sensors model number 7911000.
As an alternative, you can use thermowell 9042000
together with Pt100 sensor 7400000.

Max.temp.

250 °C

Material

Stainless steel 1.4404

Part number

9062010-001