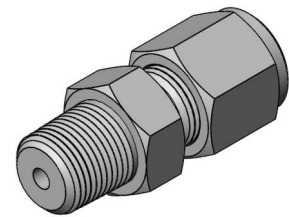


Accessories Compression fitting 1/8"NPT

Model 9045000



Design

Compression fitting in stainless steel EN 1.4404
 Connection thread 1/8"NPT
 Hex size body and cap, 13 mm

Example of use

Positioning / sealing of temperature sensors

Specifications

Ferrule, material EN 1.4404
 Max. temp. 600°C, leak proof

Adjustable ferrule, material PTFE
 Max. temp. 200°C, leak proof at low pressures

Reusable and adjustable ferrule, material EN 1.4404
 Max. temp. 600°C, for positioning only, not leak proof

Part number	Probe diameter (mm)	Ferrule material	Leak proof	Adjustable
9045005-001	0.5	EN 1.4404	x	
9045008-001	0.8	EN 1.4404	x	
9045010-001	1.0	EN 1.4404	x	
9045010-002	1.0	PTFE	x	x
9045010-003	1.0	EN 1.4404		x
9045015-001	1.5	EN 1.4404	x	
9045015-002	1.5	PTFE	x	x
9045015-003	1.5	EN 1.4404		x
9045020-001	2.0	EN 1.4404	x	
9045020-002	2.0	PTFE	x	x

Part number	Probe diameter (mm)	Ferrule material	Leak proof	Adjustable
9045025-002	2.5	PTFE	x	x
9045030-001	3.0	EN 1.4404	x	
9045030-002	3.0	PTFE	x	x
9045030-003	3.0	EN 1.4404		x
9045040-001	4.0	EN 1.4404	x	
9045040-002	4.0	PTFE	x	x
9045040-003	4.0	EN 1.4404		x
9045045-001	4.5	EN 1.4404	x	
9045045-002	4.5	PTFE	x	x
9045045-003	4.5	EN 1.4404		x