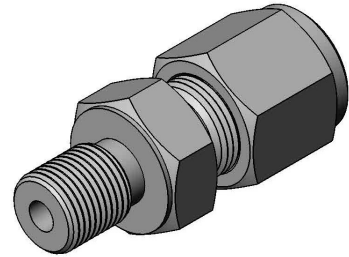


## Accessories

### Compression fitting M8x1

### Model 9044500



#### Design

Compression fitting in stainless steel EN 1.4404  
 Connection thread M8x1  
 Hex size body and cap, 13 mm

#### Example of use

Positioning / sealing of temperature sensors

#### Specifications

Ferrule, material EN 1.4404  
 Max. temp. 600°C, leak proof

Adjustable ferrule, material PTFE  
 Max. temp. 200°C, leak proof at low pressures

Reusable and adjustable ferrule, material EN 1.4404  
 Max. temp. 600°C, for positioning only, not leak proof

Part number	Probe diameter (mm)	Ferrule material	Leak proof	Adjustable
9044515-001	1.5	EN 1.4404	X	
9044515-002	1.5	PTFE	X	X
9044515-003	1.5	EN 1.4404		X
9044520-001	2.0	EN 1.4404	X	
9044520-002	2.0	PTFE	X	X
9044520-003	2.0	EN 1.4404		X
9044530-001	3.0	EN 1.4404	X	
9044530-002	3.0	PTFE	X	X
9044530-003	3.0	EN 1.4404		X
9044545-001	4.5	EN 1.4404	X	
9044545-002	4.5	PTFE	X	X
9044545-003	4.5	EN 1.4404		X